

(W 61°)

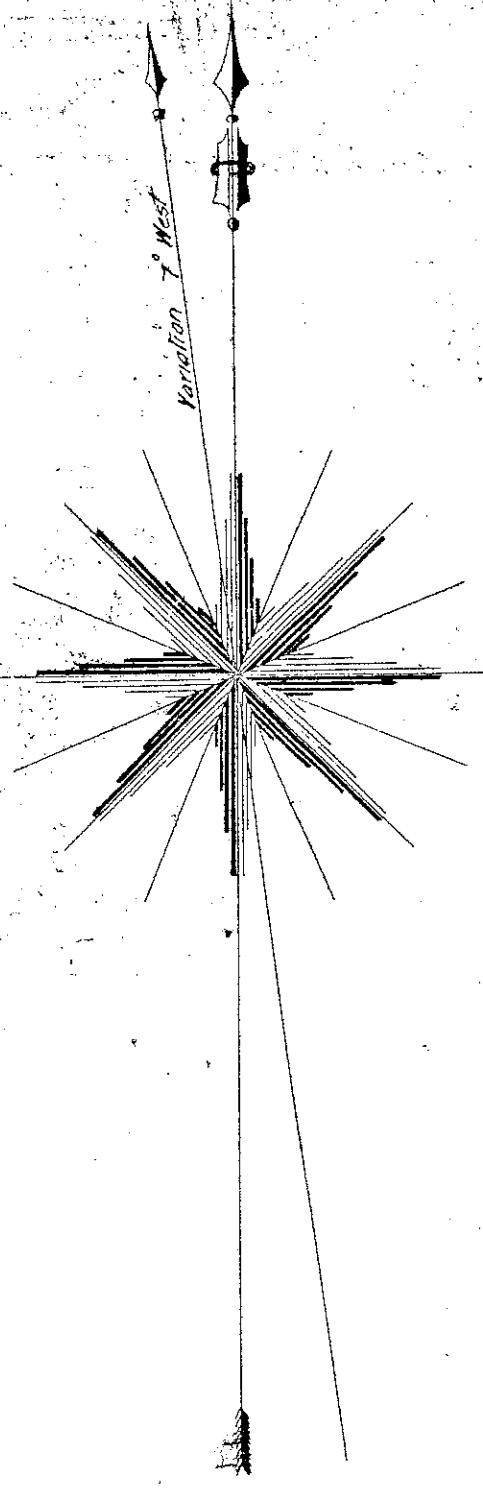
14514

# PLAN OF WIDDIFIELD DISTRICT OF NIPISSING

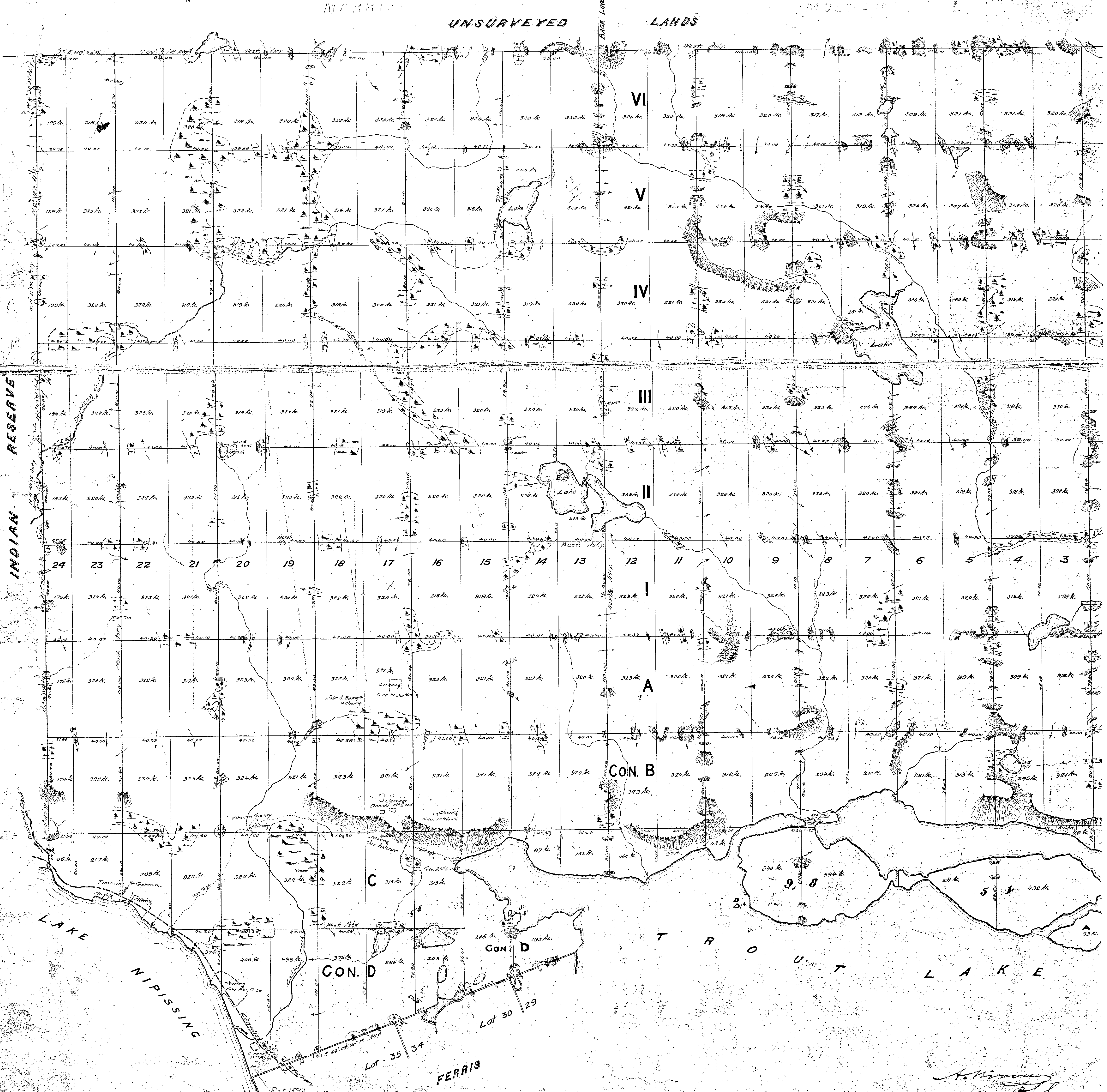
SURVEYED UNDER INSTRUCTIONS FROM THE CROWN LANDS DEPARTMENT DATED MAY 9 1883.

Scale 40 Chains to the Inch

Area of Lots = 6709  
Area of Islands A.B.C = 90  
Area of Roads = 13  
Water = 163  
Total Area of Township = 6884



MERRILL UNSURVEYED LANDS



Examined with Field notes Dec. 1883.  
Returned to Sales Branch, Jan. 22, 1884, 9 AM.  
A. M. ...  
Cory ...  
1885, April 1891